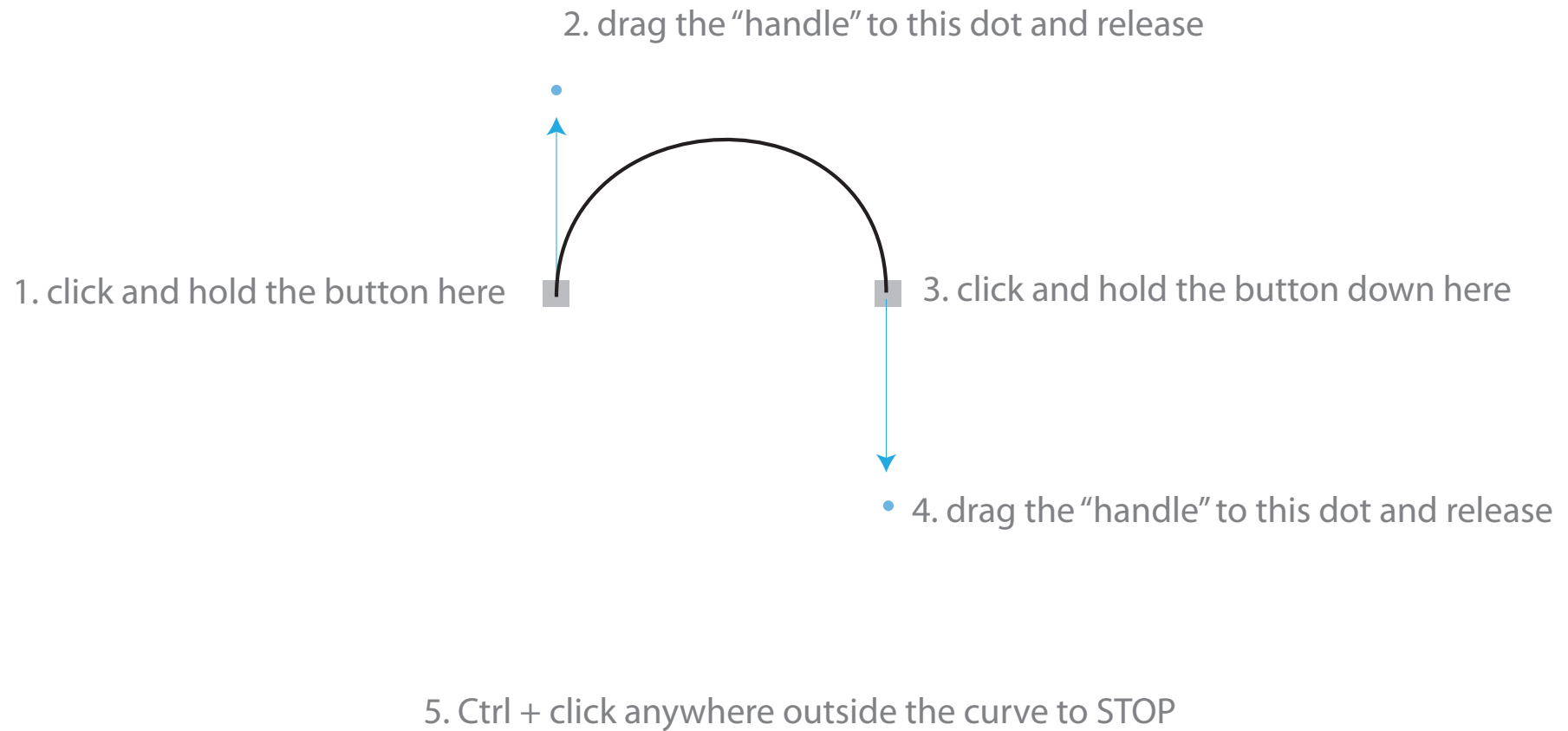


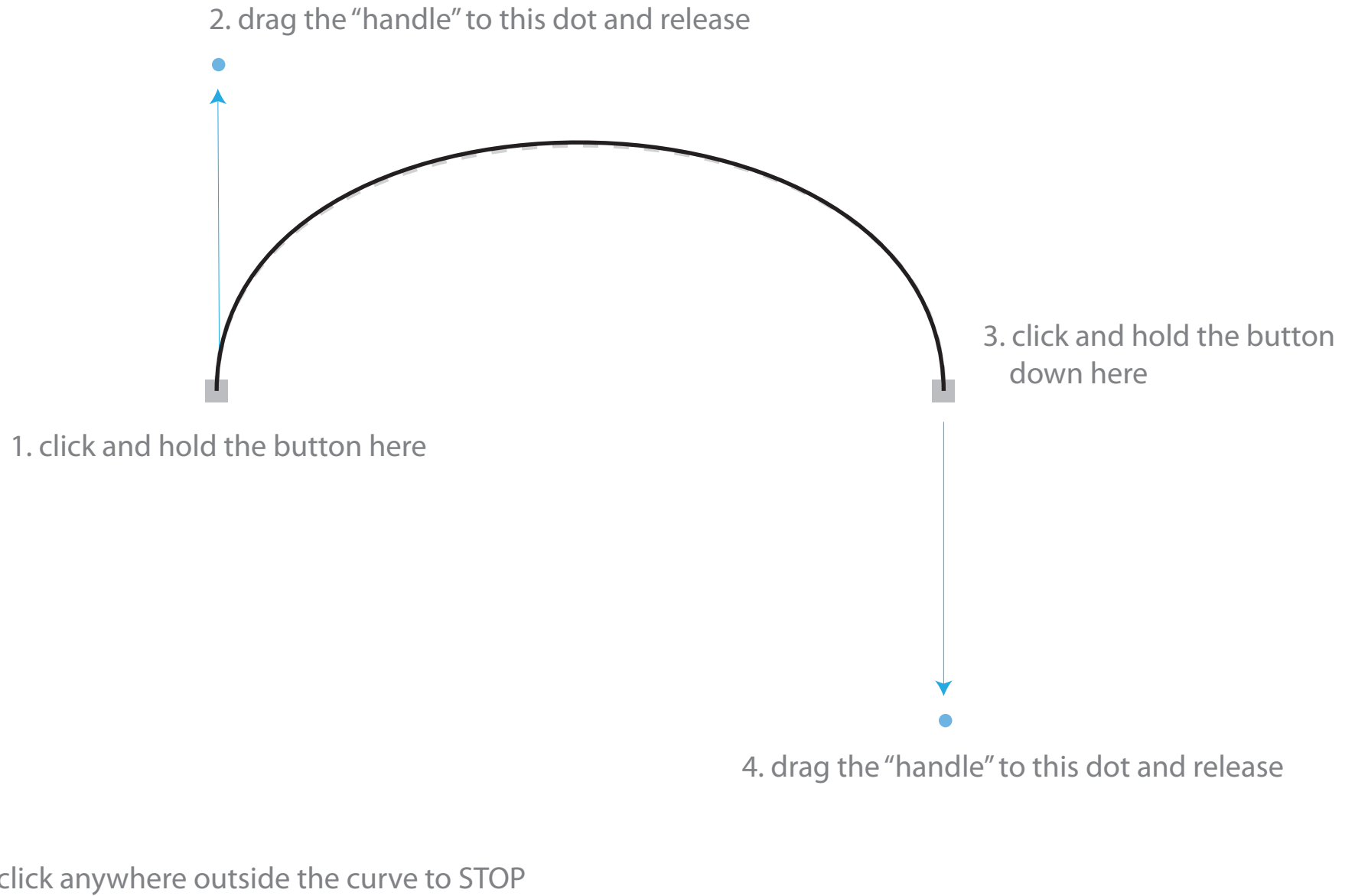
Instructions:

Complete the curved path practice on the following artboards.
Follow the numbered steps to draw the lines and shapes.

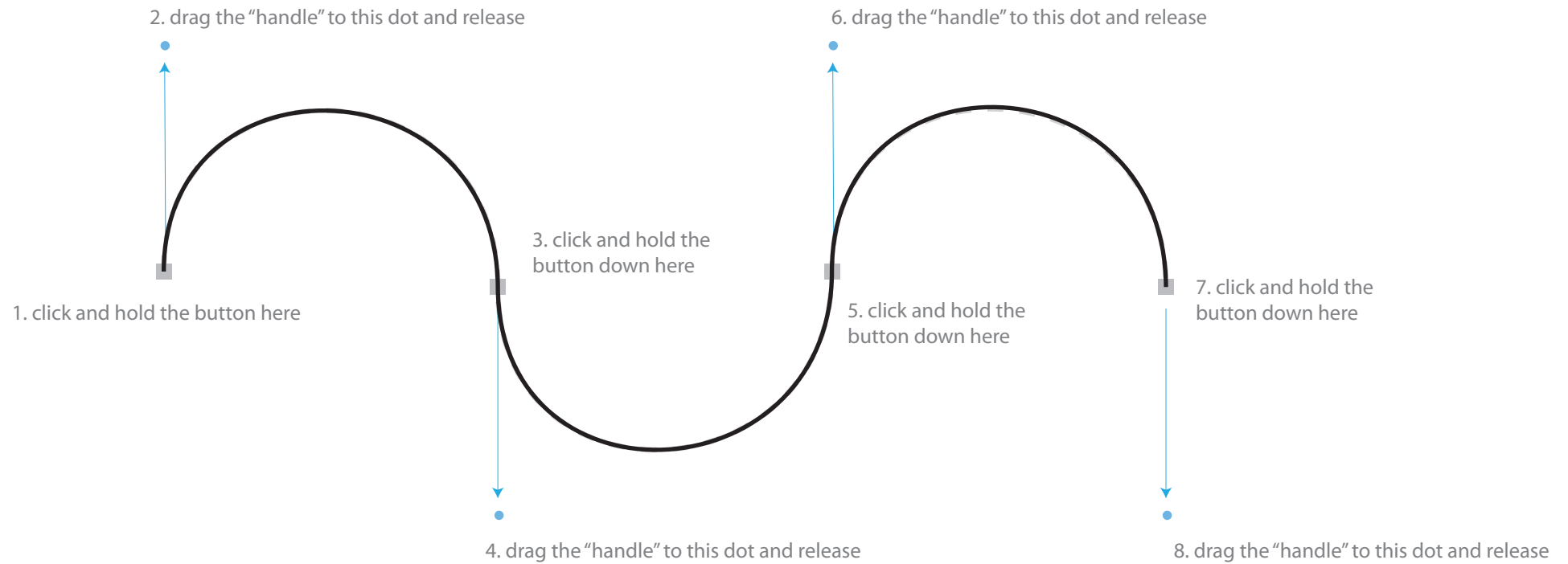
To draw a curved line you must click & drag at each point. The amount and direction you drag determines the size and direction of the curve from that point



1. Simple curve



2. Simple continuous curve



3. A wavy line

2. drag the "handle" to this dot and release

4. drag the "handle" to this dot and release

6. drag the "handle" to this dot and release

8. drag the "handle" to this dot and release

1. click and hold the button here

3. click and hold the button down here

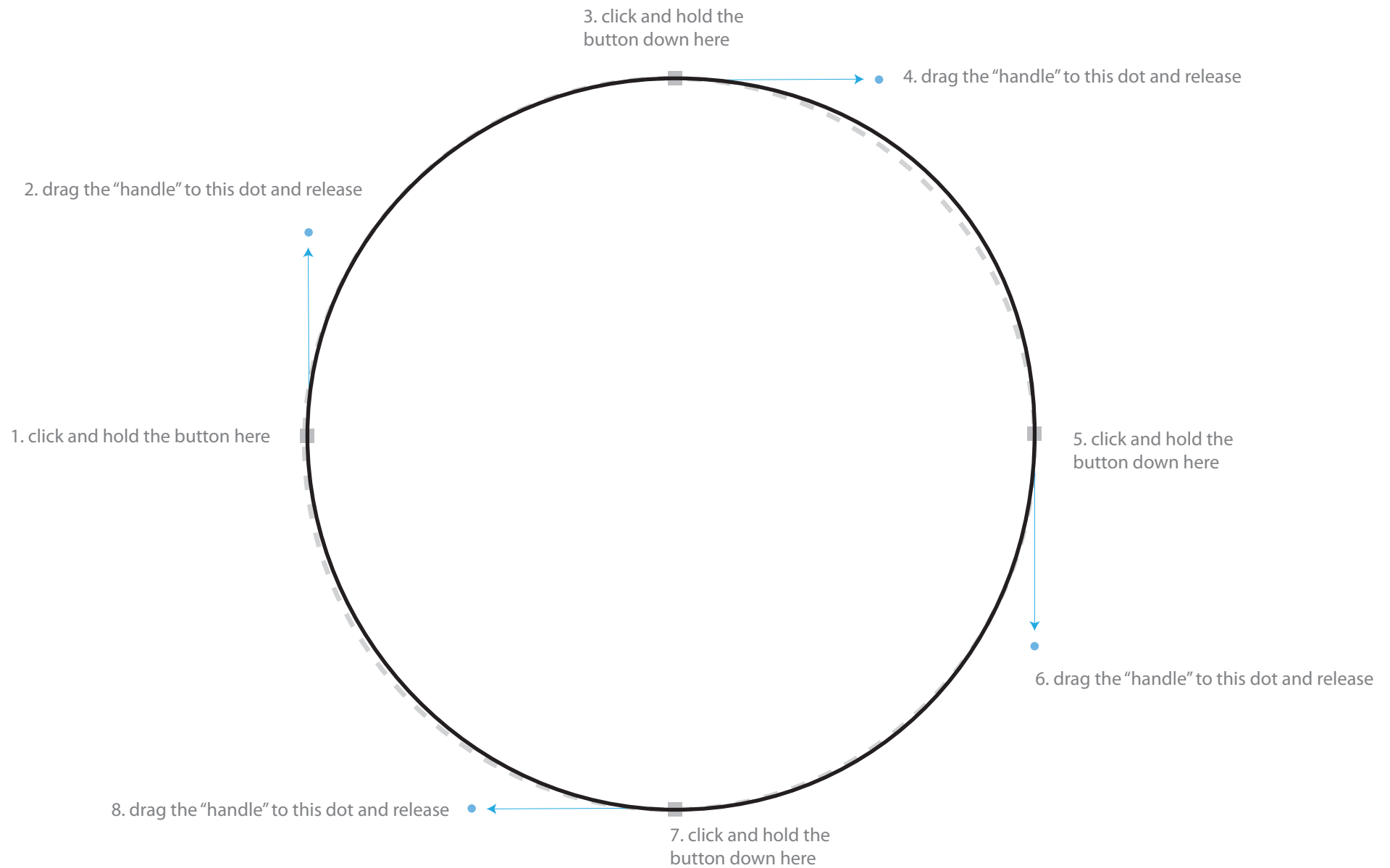
5. click and hold the button down here

7. click and hold the button down here

9. CTRL + click anywhere to stop the curve



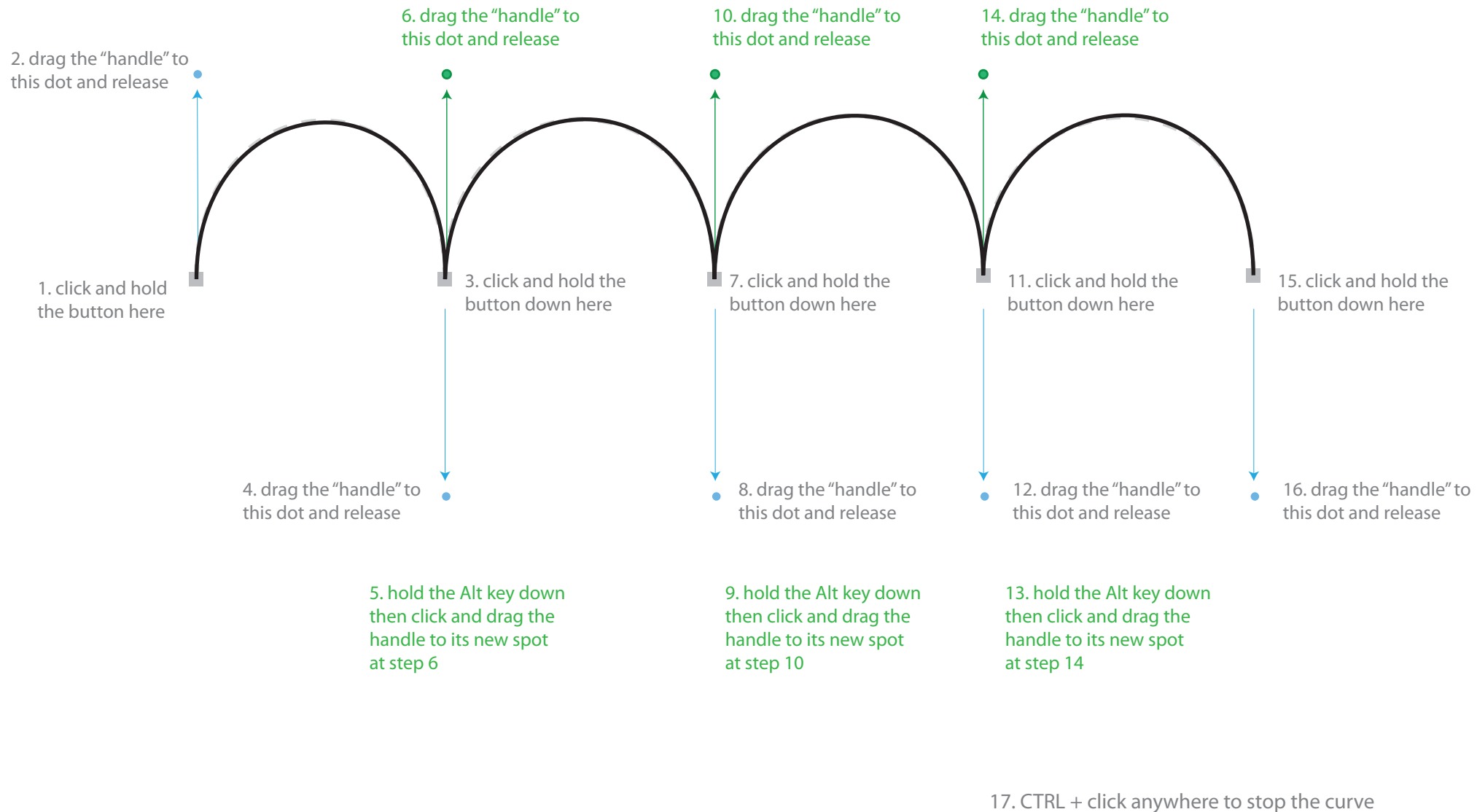
4. Drawing a circle with the pen tool



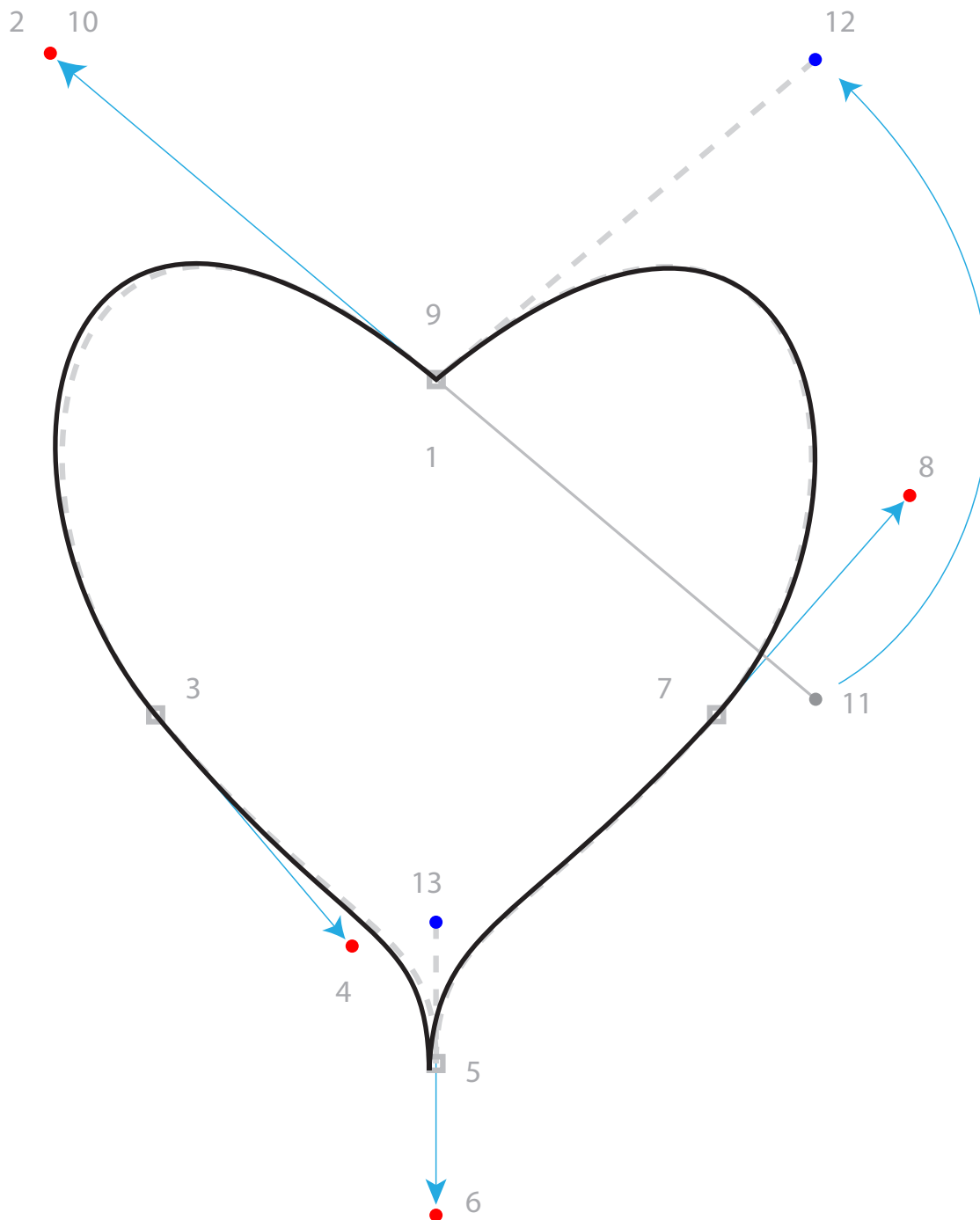
5. Simple curve that changes directions



With Alt key held down, the pen tool becomes the Convert Anchor Point Tool. Be sure your pointer looks like this before attempting any step in **green**.



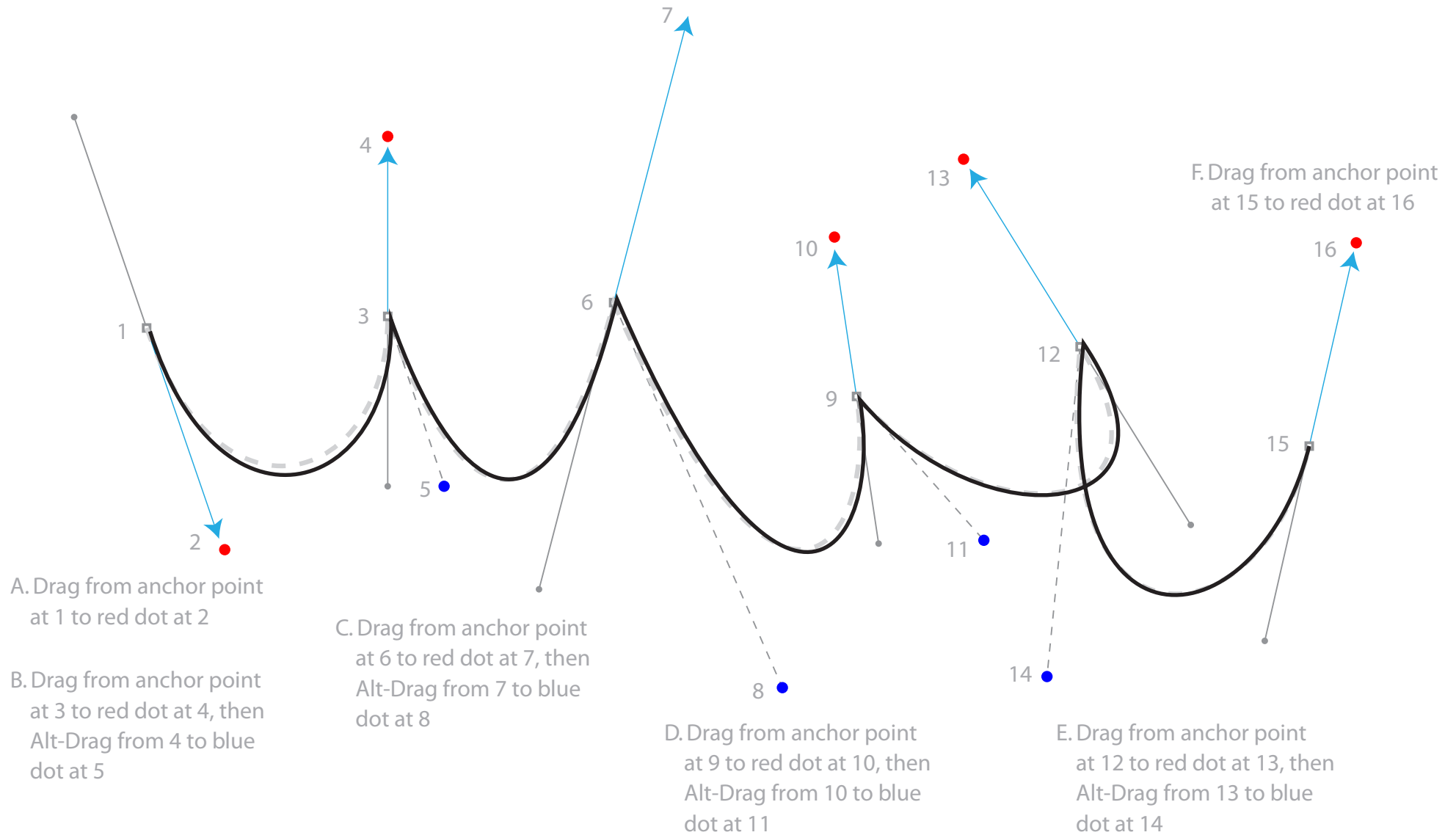
6. Heart



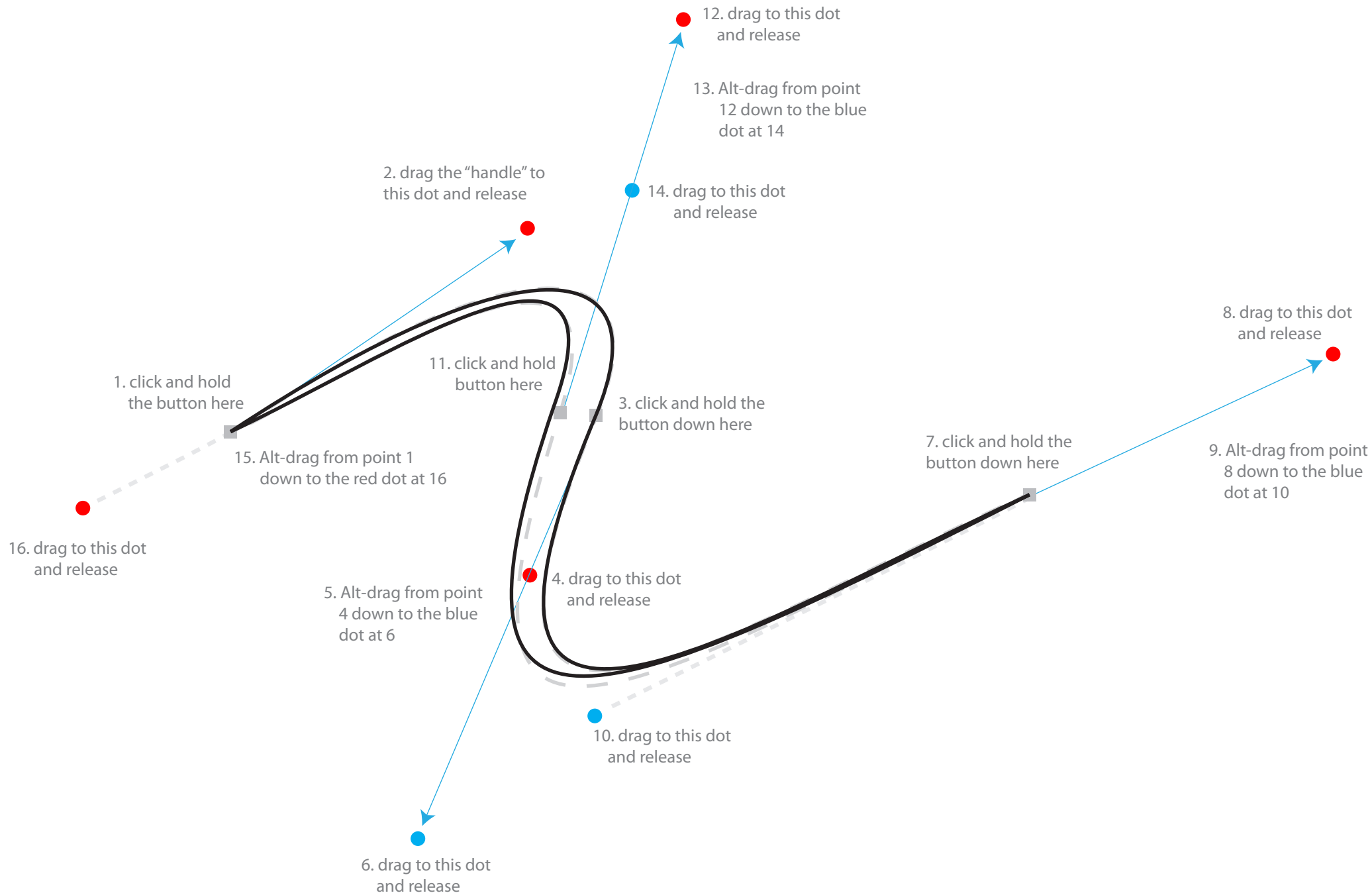
Instructional Steps

- Drag from anchor point at 1 to red dot at 2
- Drag from anchor point at 3 to red dot at 4
- Drag from anchor point at 5 to red dot at 6
- Drag from anchor point at 7 to red dot at 8
- Drag from anchor point at 9 to red dot at 10 to close the path
- Alt-drag from handle at 11 to blue dot at 12
- Use the direct selection tool to select the anchor point at 5. When a handle appears at 6, Alt-drag from 6 to blue dot at 13

7. Unconstrained Path



7. Unique "S" curve



8. Four Leaf Clover

